

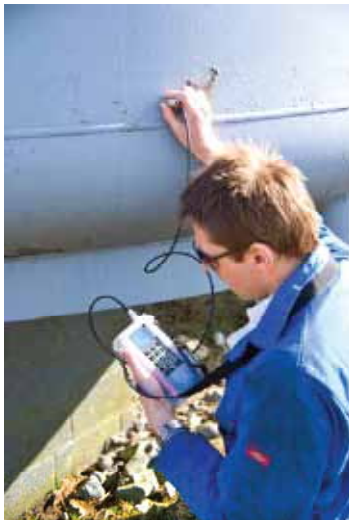


CYGNUS 3 DATA LOGGER MULTIPLE ECHO THICKNESS GAUGE

THE ORIGINAL MULTIPLE ECHO ULTRASONIC THICKNESS

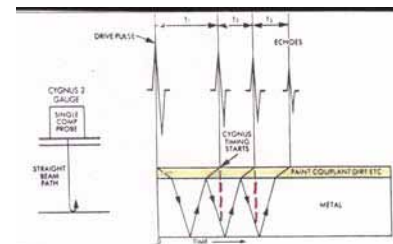
Primary Features

- Simple Linear Data Logging mode with a capacity of up to 5000 points in each record
- Grid Based Data Logging mode uses simple xy grids for up to 5000 points
- Template based data logging mode features definable measurement points, minimum & reference thickness values and up to 40 configurable user fields to collect additional information
- Facility to add Additional Radial Measurements around any chosen point
- Alphanumeric data entry via phone style keys
- Auto-log function automatically logs stable thickness measurements for one-handed operation
- Data stored on internal SD memory card for security
- Velocity Lookup Table can be customized by the user
- USB connection to computer without driver installation
- Supplied with
 - Data Logger Manager Software for generating reports and transferring data between the gauge and computer
 - Microsoft Excel add-in to easily import data into blank worksheets or Excel templates
- Housed in a rugged, IP65 rated aluminum enclosure
- Gauge senses probe type and automatically adjusts setting for optimum performance
- LCD graphic display with automatic white backlight
- Simple gauge and menu operation
- Secure, twist-to-lock probe connection (BNC)
- Deep-Coat mode for coatings up to 20mm thick
- Protective silicone sleeve offers maximum protection
- Rugged probe cable designed for superior flexibility



Benefits of Cygnus Multiple Echo

- COATINGS DO NOT HAVE TO BE REMOVED
- Measures remaining metal thickness on corroded and coated surfaces
- All measurements are error checked using 3 return echoes to give repeatable, reliable results
- Greatly reduced inspection time and cost.
- Echo strength indicator to aid measurement.



With multiple echo, readings are taken by measuring the time delay between any three consecutive back wall echoes. The time of T1 (coating thickness) is ignored. The times of T2 and T3 are equal to the time that it takes to travel through the metal. Only by looking at three echoes can the measurements be automatically verified (where $T2 = T3$)

Specification

Materials	Sound velocities between 0.059 to 0.31 in/microsec (2,000 m/s to 7,000 m/s)
Range in Steel	0.110" - to 9.995" (3mm—250mm) with 2.25MHz probe 0.065" - to 9.995" (2mm—150mm) with 3.5MHz probe 0.045" - to 9.995" (1mm—50mm) with 5.0MHz probe
Accuracy	+/- 0.005" (0.1mm) or +/- 0.002" (0.05mm)
Resolution	0.005" (0.1mm) or 0.002" (0.05mm)
Probes	Single crystal soft-faced compression 1/2" standard (13mm) - 2.25 MHz 1/4" (6mm) - 5.0 MHz 1/2" (13mm) - 5.0 MHz or 3.5 MHz 3/4" (19mm) - 2.25 MHz
Power	3 x AA Alkaline batteries or rechargeable NiMH / NiCD
Battery Life	18 hours continuous operation with alkaline batteries
Display	Large liquid crystal display with white backlight—automatically turns off in bright light conditions
Size	3.34 in x 6.69 in x 0.98 in (85mm x 170mm x 25mm)
Weight	14.10 oz (400g)
Operating Temp	14° F - 122° F
Data Output Storage	Internal storage on Flash memory card. Data output via USB connection
Data Logger (Maximum)	Measurement points per record: 5000 Records: 100 Grid record size: 100 rows x 50 columns User data fields: 40
Environmental	IP65 rated



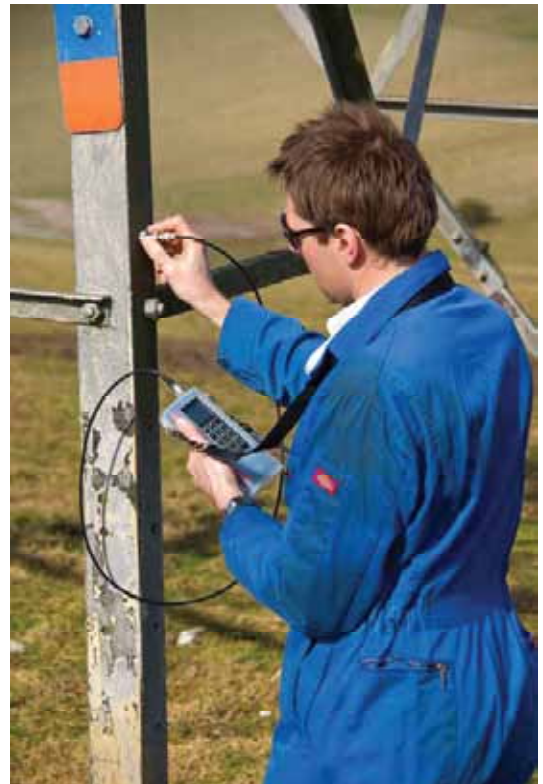
Kit contents

Instrument, 2.25MHz 1/2" probe, operations manual, carry case, protective silicone sleeve, adjustable neck strap, accessory pouch (containing cap gel, spare membranes, membrane couplant, membrane locking ring key, 1/2" test block, 3 x AAA batteries), software, USB cable, high flex probe cable and belt/harness clip.



Applications

- Ships
- Storage tanks
- Pipelines
- Bridges
- Street lighting
- LPG vessels
- Road transport tankers
- Offshore platforms
- Piers, jetties and pilings
- Processing vessels
- Cranes



CYGNUS INSTRUMENTS, INC.

P.O. BOX 6417

ANNAPOLIS MD 21401

TEL: 410-267-9771

FAX: 410-268-2013

EMAIL: sales@cygnusinstruments.com

WEB: www.cygnusinstruments.com